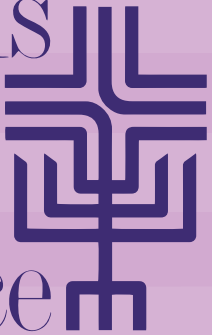




Religious
Coalition
for Reproductive
Choice



2016 *Annual Report*

From **Rev. Harry Knox**



What a joyful privilege it has been to serve as your President and CEO since 2012. The generosity of RCRC donors; the indefatigable work of volunteers from affiliates, national organization members and national board leaders; and the creative and powerful work of my staff colleagues have been an inspiration to me each day.

We have worked together for reproductive health, rights, and justice at a time of relentless attacks on women, on bodily autonomy, and on the principle that each individual is responsible and capable of working out moral and ethical decisions for themselves, G-d being our helper. Your faithfulness in the face of such opposition has given me courage to lead in spaces like the US Congress, the White House, in the media, and at rallies and workshops across the country. Such places and situations, a shy person like me might shrink from without my faith and my RCRC Family beside me.

Now a combination of my personal health issues and those of my husband have caused me to retire from national leadership. Mike and I are blessed to have moved home to South Georgia where our parents, siblings, and abundant nieces and nephews are all very close by. I thank the Board and staff of RCRC for all the ways they have redoubled their efforts to support our common work and me personally during the last several months of transition. Our work is so often spoken of in broad, institutional terms; but as our beloved Dr. Willie Parker often reminds us, it is always best done with focus on the needs of individual persons.

Rev. Harry Knox

Outgoing President and CEO

From **Katey Zeh**

The RCRC board and staff have been forming a new interim leadership structure to carry forward our renovation.

During this transition, a team of seasoned board and staff leaders who have long histories with RCRC will provide leadership. As board Chair, I will serve on this team together with the board's Vice Chair, Bishop John Selders. Joining us from the staff will be Vice Presidents Delia Allen-O'Brien and Lisa Weiner-Mahfuz. Bishop Selders and I bring significant experience leading religious communities and congregations which will be a critical component to the success and impact of our new leadership team. Delia and Lisa both bring experience in revamping RCRC's infrastructure, financial systems and programs which are also vital to our coalition's effectiveness.

Our mixed emotions include excitement about new programs that are starting to have an impact at the local and national level. Over the past two years we have launched a Southern program, revamped our pastoral care program, implemented a theologies of reproductive justice project and launched a new communications strategy focused on strengthening the ties within our coalition and amplifying the faithful voices of religious leaders.

RCRC has come a long way in the last several years. The interim leadership team is honored to guide RCRC to a vibrant future. Our ministry of love and reproductive justice remains critical to the national debate. We are committed to further building this faithful movement. Please continue to join us.



Katey Zeh

Board Chair

Tri-directorship Model *at* RCRC

Over the last year, RCRC's board made some major structural decisions that are intended to better align all parts of the organization. These changes (which we call our "renovation") are focused on positioning RCRC for greater programmatic impact, collaboration, and amplification. They have changed how RCRC functions operationally, thinks about leadership, collaborates in the movement, and communicates its message.

One of the biggest changes we made was that RCRC now has adopted a new tri-director, co-executive leadership model in order to foster more collaborative leadership across the organization. In October 2016, Delia Allen-O'Brien and Lisa Weiner-Mahfuz were appointed as co-directors. In May 2017, Rev. Dr. Cari Jackson completed the team in the new position of Executive for Religious Leadership and Advocacy. Rev. Dr. Jackson is a scholar, pastor and activist. A graduate of Union Theological Seminary (M.Div.) and Drew University (Ph.D.), she has served as adjunct seminary faculty and pastors at the United Church of Christ, United Methodist Church, and Presbyterian Church USA. She grew up Pentecostal and has deep ties to Pentecostal congregations. Rev. Dr. Jackson brings tremendous experience organizing religious leaders across faith traditions to address a range of justice issues.

These changes have strengthened RCRC's sustainability, relevance, capacity, and impact in the reproductive freedom movement. Each piece of RCRC's work now is focused on building and telling an impactful story that can move the dial politically, socially, theologically, and/or culturally in one or more aspects of our vitally important work. Our priorities are focused on cultivating relationships, developing leaders, and forging partnerships that bring RCRC's prophetic voice and mission to scale.



Founding Members

The following organizations served as the founding members of the Religious Coalition for Reproductive Choice.

American Jewish Committee
American Jewish Congress
Anti-Defamation League
Catholics for Choice
Central Conference of American Rabbis
Disciples for Choice
Episcopal Church
Episcopal Women's Caucus
Jewish Reconstructionist Movement
Jewish Women International
Lutheran Women's Caucus
Methodist Federation for Social Action
Metropolitan Community Church
NA'AMAT USA
National Council of Jewish Women
Presbyterian Mission Agency
Presbyterians Affirming Reproductive Options (PARO)
Rabbinical Assembly
Reconstructionist Rabbinical Association
Society for Humanistic Judaism
Union for Reform Judaism
Unitarian Universalist Association of Congregations
Unitarian Universalist Women's Federation
United Church of Christ
United Methodist Women
Women of Reform Judaism
Women's League for Conservative Judaism





Building Leaders of Moral Courage

As part of our work to develop moral and courageous religious leaders, RCRC and Auburn Seminary teamed up to host a “design shop convening” to address some of most challenging questions we face in our work to bless reproductive health centers-all of which also provide compassionate abortion care-throughout the country. We brought together abortion care providers, activists and religious leaders and emerged after a week of intensive leadership development and strategy work with a robust implementation plan. This partnership with Auburn Seminary has been joyful and meaningful to both organization and resulted in a strategic plan for launching our clinic blessing project and positioning more religious leaders across faith traditions to be bold, prophetic and actively engaged in reproductive health, rights and justice work.



Regional and Community Organizing

As part of our work to build comprehensive regional strategies and partnerships-particularly with our 11 affiliates throughout the country-we are focused on grounding our work in the Southern region. RCRC is working most deeply in Mississippi, Louisiana, South Carolina and North Carolina. We are taking a bottom-up approach to building our networks and strength in the South. Charity Woods, our Director of Southern Programs, has made considerable headway in collaborating with the more visible and diverse networks of religious leaders in the region but also with those “pockets” of religious leaders who are working in very small groups and/or in isolation.

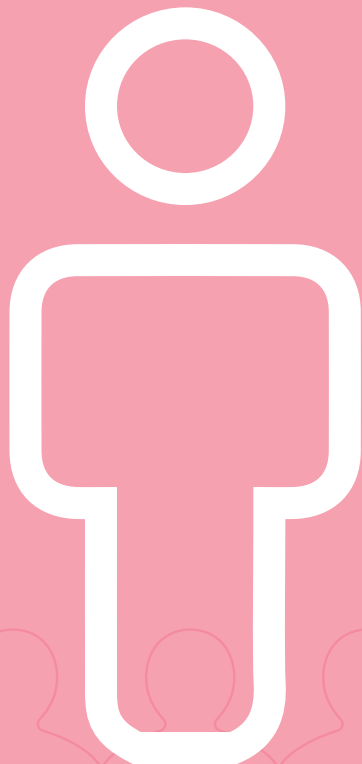


Amplifying the Voices of Religious Leaders

We come from brave people! RCRC was founded 50 years ago as the Clergy Consultation Service on Abortion. CCS was an underground network of religious leaders who transported women to safe abortions before the passage of *Roe v. Wade*. Because of our history, we feel that it is our duty to be as loud and amplified as possible given that the religious right has seized the moral high ground on our issues. Through our strategic communications efforts RCRC is on the move building relationships with reporters, amplifying our messages of compassion and love for women and their families and positioning our organization as the “go to” expert on issues at the intersection of reproductive freedom and religion.



Connecting *with* Community

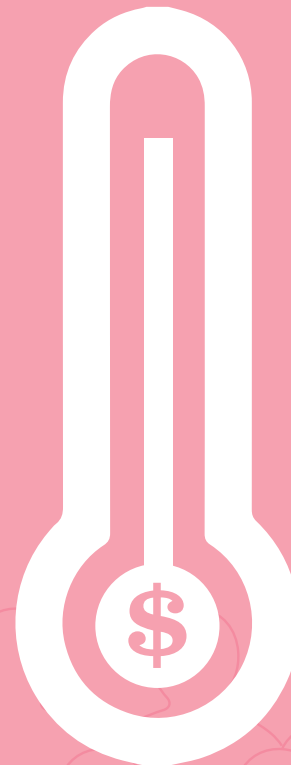


46%

increase in online user engagement in 2016.

169%

increase in visitors to RCRC's Facebook page in 2016.



34%

of return donors in 2016 after a period of not being involved.

53%

of donors have been giving for more than 16 years.

8

loyal donors have been giving for more than 36 years since 1980.

Partnerships

Over the past year, we have formally launched a strategic partnerships program. This emerging program is headed by Lisa Weiner-Mahfuz and is focused on how RCRC will engage in partnership work with leaders, sectors, donors and, in our case, congregations and denominations. With each collaborative project/partnership we scan the landscape, we focus on our goals, impacts and outcomes and we implement an action plan. This approach ensures that our partnerships are driven by vision and impact. We believe strongly that partnerships should be mutually beneficial and should bring the work of all parties involved to the next level of development and/or scale. As a result, we engage in in-depth relationship building and planning before entering into formal agreements with potential partners. Alignment of values, vision and expectations are critical to the success of any partnership and allow us to course correct when things are not moving in the intended direction.



Auburn Theological Seminary

Brian Larsen

Catholics for Choice

Civil Liberties and Public Policy Conference

Covenant Baptist United Church of Christ

Mollie Katz

Planned Parenthood Metropolitan Washington

Preterm Clinic

Rev. Dr. Cari Jackson

Samuel DeWitt Proctor Conference

Toni Bond Leonard

Gratitude *to:*

Foundations

*Anne Hale Johnson
Anonymous
Carpenter
General Services
Gibbs/ Green Fund
L&D Goldman
Martin & Brown
Packard
Prentice
Reynolds Family Foundation*

UMC Annual Conferences

*California - Nevada
New England
New York
Oregon-Idaho
Rocky Mountain
The Pacific Northwest*

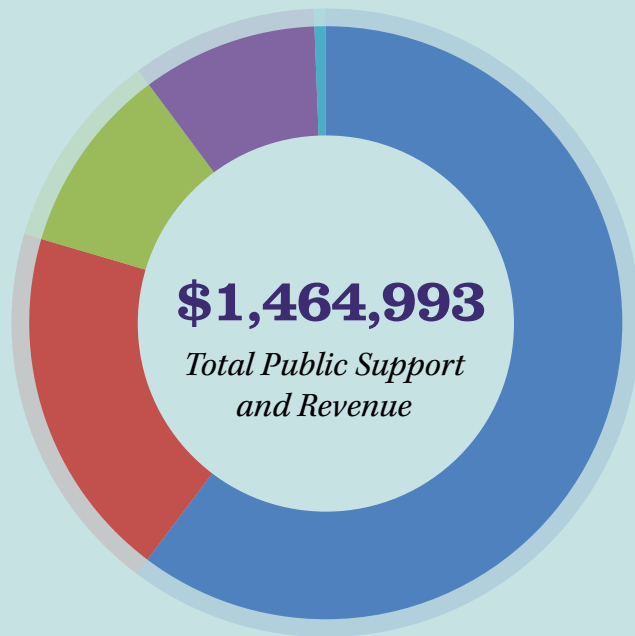
Congregations

*Evangelical Lutheran Church, PA
Kings Highway United Methodist, NY
Main Line Reform Temple, PA
Pilgrim United Church Of Christ, CA
Rocky Mountain Conference of United
Methodist Church, CO
Trinity Church Wall Street, NY
UCC Women of Michigan, MI
Unitarian Universalist Church at
Washington Crossing, NY
Unitarian Universalist Church of
Rockville, MD
Unitarian Universalist Fellowship of
Raleigh, NC
Unitarian Universalist Women of
Greater Lynn, MA
Unitarian Universalist Women's
Connection, IL
Unitarian Universalist Women's
Federation, MA
United Methodist Women of Sparta, NJ*

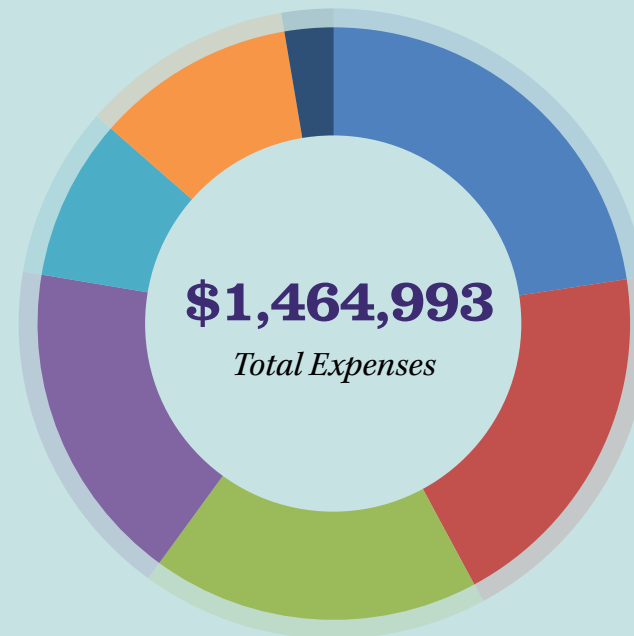
Major Donors

*Alice Weston
Alicia Ostriker
Allen Baum & Donna White
Barbara Van Ark Wilson (Deceased)
Dr. Betty Hoskins (Deceased)
Carolyn Healy
Curtis & Eva Aanenson
David & Frances F. Yelen
David Sigman
Diana Sattelberger
Dorothea Prior (Deceased)
Dr. Geri Alpert
Emily Mason Kahn
Evelyn Hart
Frances Kissling
Hillary Hutchinson
Janet Martin
Jean Stanfield
Joanna Kapner
Joel Abrams
John O'Connell
John & Pamela Lindstrom
John Parker
Joseph Parsons
Josephine De Give
Judith Rosen
Rev. Julie Denny-Hughes
Katharine Pierce
Kathy Jones
Kesha Evans
Lee Bryant
Leisa Devenny
Leslie Haber
Lucinda Dudley
Marcella Cohen
Marjorie Koldinger
Mike Brill
Nancy Drennen
Dr. Pat Kenschaft
Patricia McGovern
Peter Malkin
Rev. Dr. Rebecca Peters &
Dr. Jeffrey Hatcher
Rebecca Shockley
Renata Schwebel
Robert Meneilly
Dr. Roger and Joan Grimm
Dr. Ron Fattor
Sarah Ludwig
Sara Nerken
Scott Hunter
Sue Williams
Suzanne Gouvernet
Theodore Winsberg
Dr. Valerie Tarico
William Miracle*

2016 Revenues *and* Expenses



- 60%** *Private Foundations*
- 19%** *Individuals*
- 10%** *Bequests*
- 10%** *Use of Prior Year Surplus*
- 1%** *Interest and Miscellaneous*



- 22%** *Southern Program*
- 19%** *Faith Leaders Network*
- 18%** *Theologies of Reproductive Justice*
- 18%** *Education/Visibility*
- 11%** *Fundraising*
- 9%** *Capacity Building*
- 2%** *Administration*

Board of Directors *and* Staff

2016 Board of Directors

Roni Berkowitz
Michael Brill
Rev. Paul Britner
Kristen Dart
Rev. M. Linda Jaramillo
Rev. Dr. Elizabeth Kaeton
Rev. Marti Keller
Rabbi Jessica Kirschner
Kate Lannamann
Mary T. Larson
Dr. Willie J. Parker
Rev. Aaron Payson
Rev. Edwin Sanders, II
Rev. Ed Searl
Bishop John Selders
Rev. Madison Shockley, II
Rev. Dr. William Sinkford
Rev. Dr. Alethea Smith-Withers
Deborah Tanno
Cathy Thompson
Lori Weinstein
Katey Zeh

2016 Staff

Delia Allen O'Brien
Vice President of Operations and Finance

R. Warren Gill
Communication Manager

Rev. Kathryn Johnson
Director of Faith Leader Engagement

Rev. Harry Knox
Chief Executive Officer

Melanie Bui Larsen
Associate Director of Operations

Chauna Lawson
Operations Associate/Office Manager

Carolyn Miller
Accountant

Lisa Weiner-Mahfuz
Vice President of Programs and Development

Charity Woods
Director of Southern Programs



1413 K Street NW, 14th Floor
Washington, DC 20005
www.rcrc.org | 202.628.7700

RCRC Affiliates

California RCRC	Minnesota RCRC
Colorado RCRC	New Mexico RCRC
Connecticut RCRC	Ohio RCRC
Illinois RCRC	Oklahoma RCRC
Indiana RCRC	Wisconsin RCRC
Kentucky RCRC	